

Department of Engineering  
Dan Gaillet, P.E., County Engineer

3137 South Liberty Street, Canton, MS 39046  
Office (601) 790-2525 FAX (601) 859-3430

## MEMORANDUM

May 29, 2018

To: Sheila Jones, Supervisor, District I  
Trey Baxter, Supervisor, District II  
Gerald Steen, Supervisor, District III  
David Bishop, Supervisor, District IV  
Paul Griffin, Supervisor, District V

From: Dan Gaillet, P.E. *DG*  
County Engineer

Re: Sink Hole  
134 W. Elbridge Way  
Harvey Crossing Subdivision

Multiple sink holes have formed at this address due to the failure of the storm water system and utilities boring through storm water pipes.

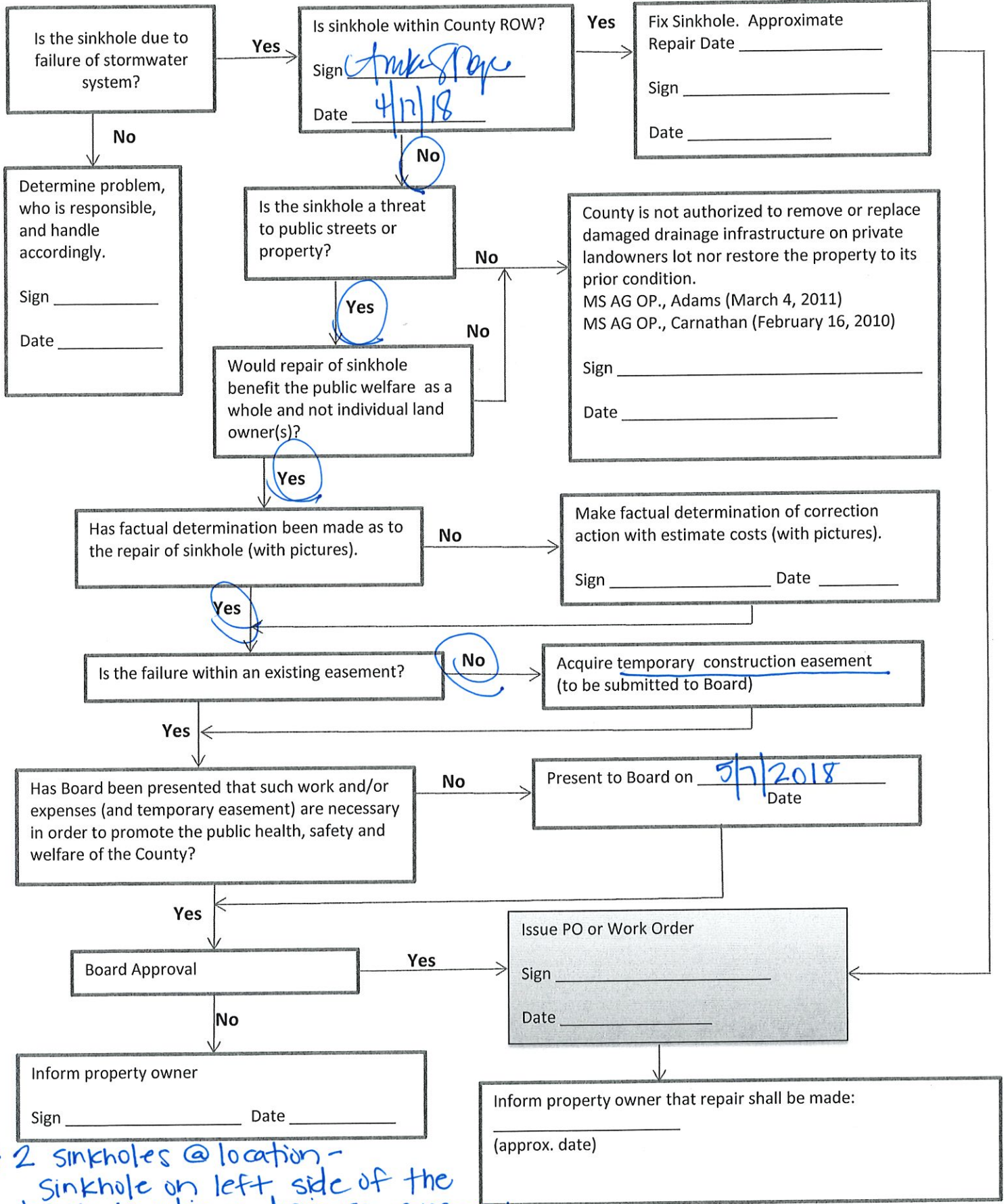
The first location is within a drainage easement on the left side of the property. The Engineering Department suspects that the pipe has collapsed which is causing water to back up on W. Elbridge Way and creating a dangerous sink hole. However, a full determination will be made after authorization is granted to work on private property.

The second location is outside ROW and drainage easement. The Engineering Department has verified through the use of video that at least two (2) utilities have bore through the pipe.

# SINKHOLE FLOW CHART

LOCATION: 134 W Elbridge Way

DATE: 4/17/18



\* 2 sinkholes @ location -  
sinkhole on left side of the house is w/in a drainage easement.  
The 2nd sinkhole is on the right side of the house with no easement.

A photograph showing a close-up of a wooden fence made of vertical planks. The fence is weathered and dark. In the foreground, there is a patch of green grass with some dry, brownish grass. Handwritten text in black ink is visible on the grass.

134 W Elm St. Why

LT  
SIDE

Easement - Yes

134 W ELBRIDGE WAY  
RT SIDE  
NO EASEMENT



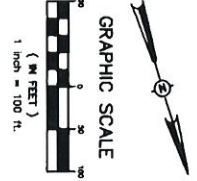
- NOTES:
1. THIS SUBDIVISION LIES WITHIN THE LOTS ESTABLISHED FOR THE HARVEY CROSSING I PLAT DATED APRIL 15, 1984, MAP NUMBER 288800215 D EFFECTIVE APRIL 15, 1984, MAP NUMBER 288800215 D.
  2. DIMENSIONS ALONG CURVES ARE CHORD DISTANCES.
  3. SURVEY CLASSIFICATION "S".
  4. REFERENCE MERIDIAN: WEST LINE OF HARVEY CROSSING I.
  5. IRON PINS SET AT ALL LOT CORNERS.
  6. AREA = 21,339 ACRES, MORE OR LESS.

# HARVEY CROSSING II-A

SITUATED IN THE  
SOUTHEAST 1/4 OF SECTION 24,  
TOWNSHIP 8 NORTH - RANGE 2 EAST  
MADISON COUNTY, MISSISSIPPI

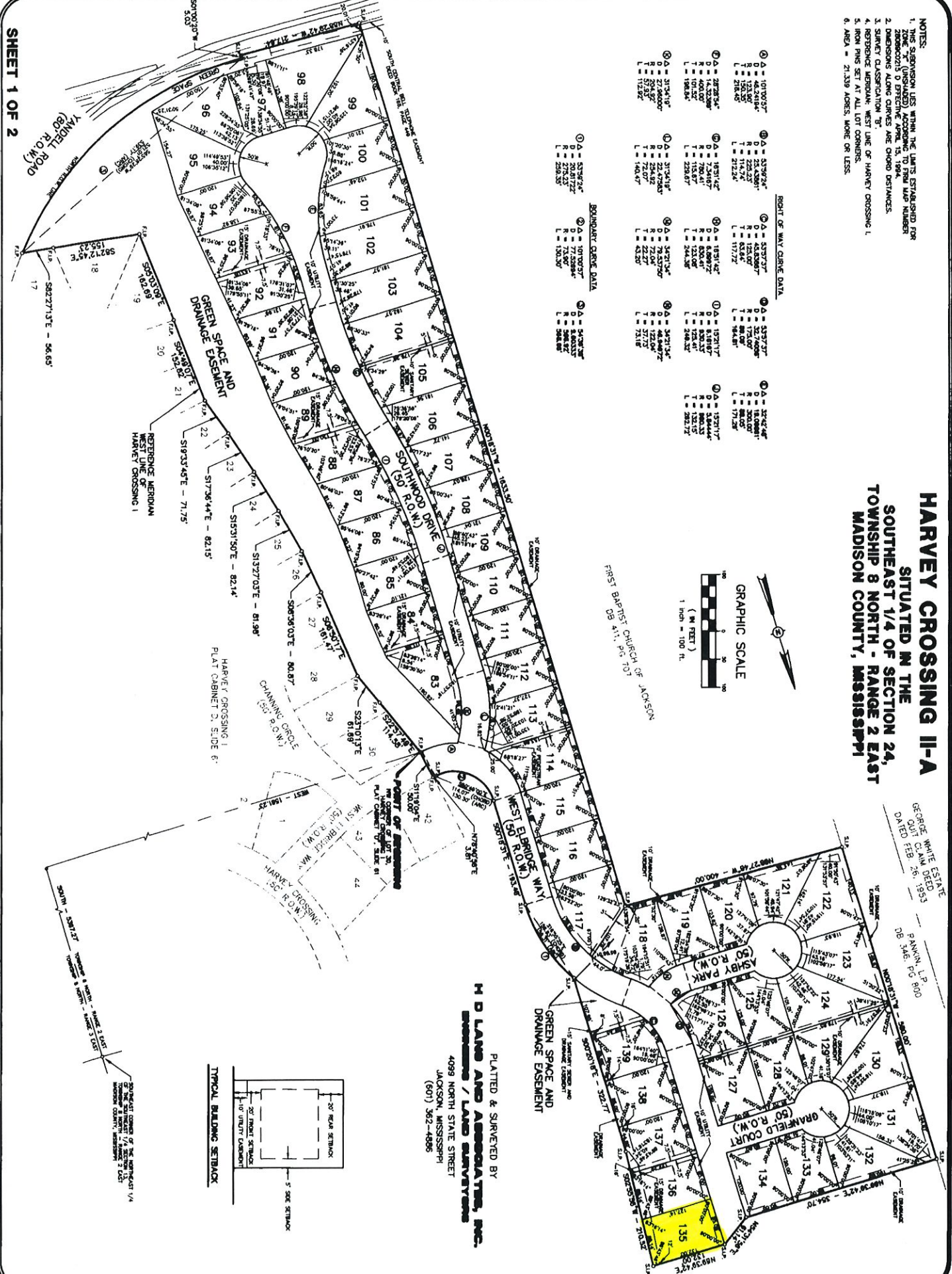
D-87 2964

GEORGE WHITE ESTATE  
QUIT CLAIM DEED  
DATED FEB. 26, 1953  
PAYON, L.P.  
DB 346; PG 800

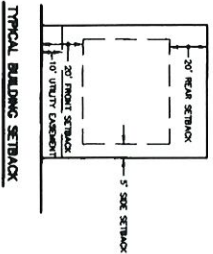


BOUNDARY CURVE DATA

Station	Bearing	Distance	Station	Bearing	Distance
1	S 33° 57' 37" W	101.0000	10	S 33° 57' 37" W	101.0000
2	S 33° 57' 37" W	101.0000	11	S 33° 57' 37" W	101.0000
3	S 33° 57' 37" W	101.0000	12	S 33° 57' 37" W	101.0000
4	S 33° 57' 37" W	101.0000	13	S 33° 57' 37" W	101.0000
5	S 33° 57' 37" W	101.0000	14	S 33° 57' 37" W	101.0000
6	S 33° 57' 37" W	101.0000	15	S 33° 57' 37" W	101.0000
7	S 33° 57' 37" W	101.0000	16	S 33° 57' 37" W	101.0000
8	S 33° 57' 37" W	101.0000	17	S 33° 57' 37" W	101.0000
9	S 33° 57' 37" W	101.0000	18	S 33° 57' 37" W	101.0000
10	S 33° 57' 37" W	101.0000	19	S 33° 57' 37" W	101.0000



PLATTED & SURVEYED BY  
**H D LAND AND ASSOCIATES, INC.**  
ENGINEERS / LAND SURVEYORS  
4099 NORTH STATE STREET  
JACKSON, MISSISSIPPI  
(601) 362-4888



- NOTES:
1. THIS SURVEYOR LIES WITHIN THE LIMITS ESTABLISHED FOR ZONES "A", "X" (SHADED) AND "Y" (NO SHADING) ACCORDING TO THE ZONING ORDINANCES OF MADISON COUNTY, MISSISSIPPI, AS AMENDED BY RESOLUTION NO. 1984 AND RESOLUTION NO. 1985, EFFECTIVE APRIL 15, 1984.
  2. DIMENSIONS ALONG CURVES ARE CHORD DISTANCES.
  3. SURVEY CLASSIFICATION "B".
  4. REFERENCE MERIDIAN: NORTH LINE OF HARVEY CROSSING III-A.
  5. IRON PINS SET AT ALL LOT CORNERS.
  6. AREA = 24,525 ACRES, MORE OR LESS.

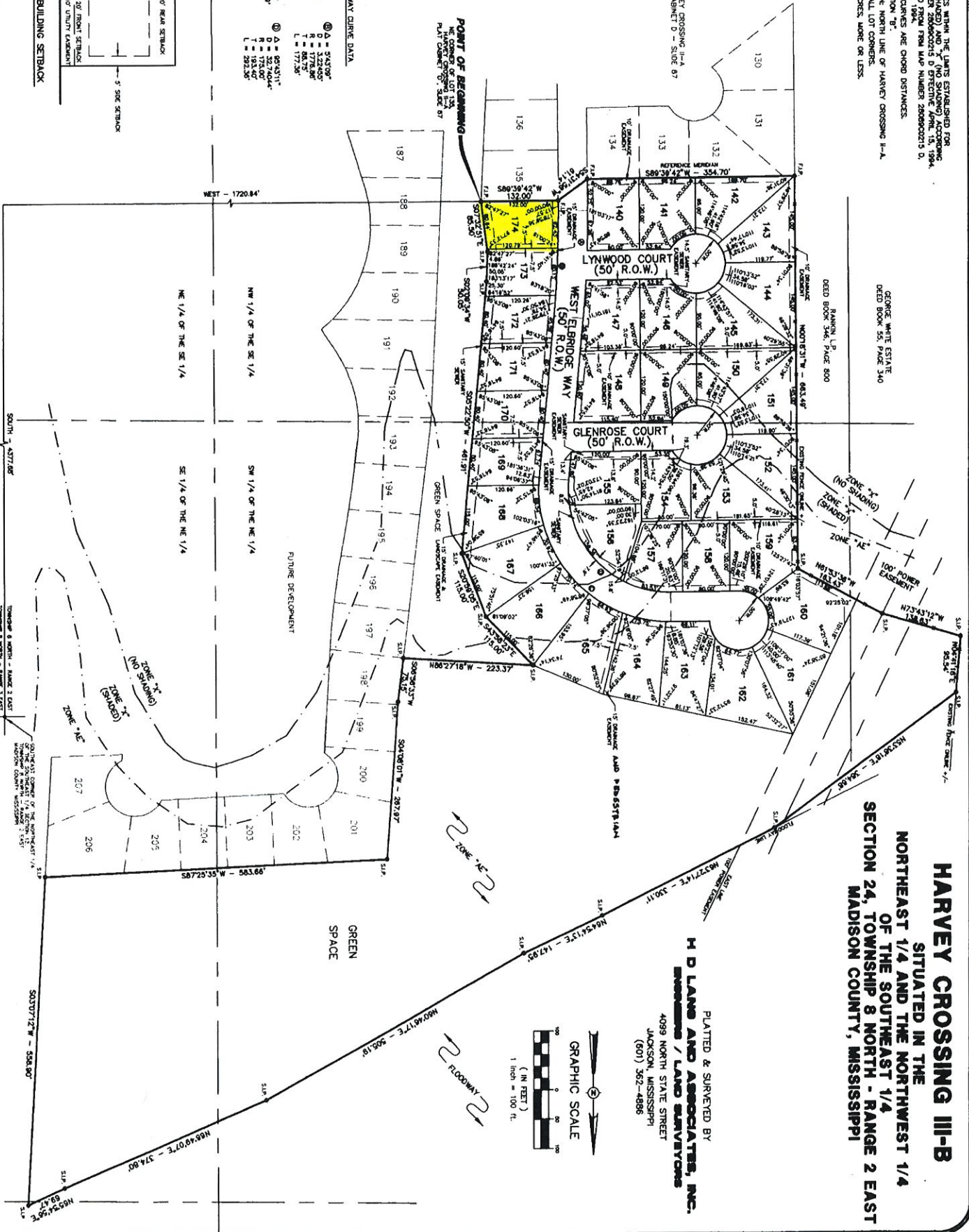
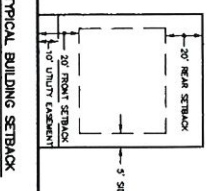
**HARVEY CROSSING III-B**  
 SITUATED IN THE  
 NORTHEAST 1/4 AND THE NORTHWEST 1/4  
 OF THE SOUTHWEST 1/4  
 SECTION 24, TOWNSHIP 8 NORTH - RANGE 2 EAST  
 MADISON COUNTY, MISSISSIPPI

PLATTED & SURVEYED BY  
**H D LAND AND ASSOCIATES, INC.**  
 ENGINEERS / LAND SURVEYORS  
 4099 NORTH STATE STREET  
 JACKSON, MISSISSIPPI  
 (601) 362-4886



RIGHT OF WAY CURVE DATA

Station	Curve Data
① A - 54.500'	① A - 54.500'
② D - 51.500'	② D - 51.500'
③ R - 100.000'	③ R - 100.000'
④ L - 100.000'	④ L - 100.000'
⑤ A - 95.94371'	⑤ A - 95.94371'
⑥ D - 22.84477'	⑥ D - 22.84477'
⑦ R - 22.84477'	⑦ R - 22.84477'
⑧ L - 57.8288'	⑧ L - 57.8288'
⑨ A - 82.43311'	⑨ A - 82.43311'
⑩ D - 22.84477'	⑩ D - 22.84477'
⑪ R - 22.84477'	⑪ R - 22.84477'
⑫ L - 22.236'	⑫ L - 22.236'



D-130A